

GREASE DUCT ENCLOSURE

INSTALLATION GUIDE

8050 Highland Pointe Parkway • Macedonia, Ohio • 800-863-5400 • Fax: 330-468-6610 • www.etschaefer.com

WRAPID I duct insulation consists of a single layer system applied directly on the grease duct surface to provide a 2-hour rated enclosure with zero clearance to combustibles at the butt strip or overlap. Based upon independent fire test laboratories three installation techniques are permitted.

Telescoping Overlap Wrap

Cut the insulation to a length sufficient to wrap around the duct and provide a minimum 3" overlap. Cut the adjacent piece of WRAPID long enough to wrap around the duct circumference with a 3" overlap. It shall also be installed with a minimum 3" longitudinal overlap on to the previously installed piece.

To ease installation 1" filament tape is allowed to temporarily secure insulation to the duct and insulation. Install the tape 1.5" from the blanket edge and approximately 10.5" on center. Use stainless steel or carbon steel banding to permanently attach the material to the duct, placing the banding in the same locations as the tape. Tighten banding firmly enough to hold insulation in place but not so tight as to crimp or tear insulation material.

For duct spans greater than 24" wide, steel insulation pins shall be welded on the bottom

of the horizontal duct surfaces. Insulation pins are also required on the outside of vertical duct rises. Space pins in columns 12" on center, 6" to 12" from each duct edge and nominally 10.5" apart. The blanket material is held in place with speed clips to keep the system from sagging. Bend over excess pin lengths to avoid accidental injuries.

Checkerboard Overlap Wrap

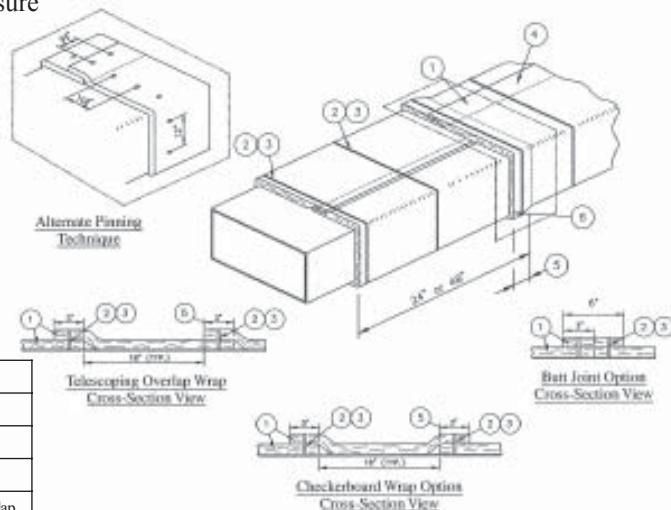
This installation uses a 3" overlap pattern with both edges of each alternating blanket covered by each adjacent blanket whose edges are exposed. (See drawing below) The overlap joints in alternate layers of blanket resemble a checkerboard pattern in the completed installation. Banding and pin spacing are the same for all methods of installation.

Butt joint with Collar Wrap

This method permits installation with the edges butted together. Over these butted edges a 6" wide collar of blanket material is centered over the butt splice. Use banding 1" from each edge of butt strip to secure strip to duct. All other banding and pin spacing are the same for all methods of installation.



2-hr Grease Duct Enclosure



1	WRAPID I Duct insulation
2	Filament Tape
3	Banding Straps
4	3" Minimum Longitudinal Overlap
5	3" Minimum Circumferential Overlap

GREASE DUCT ACCESS DOOR

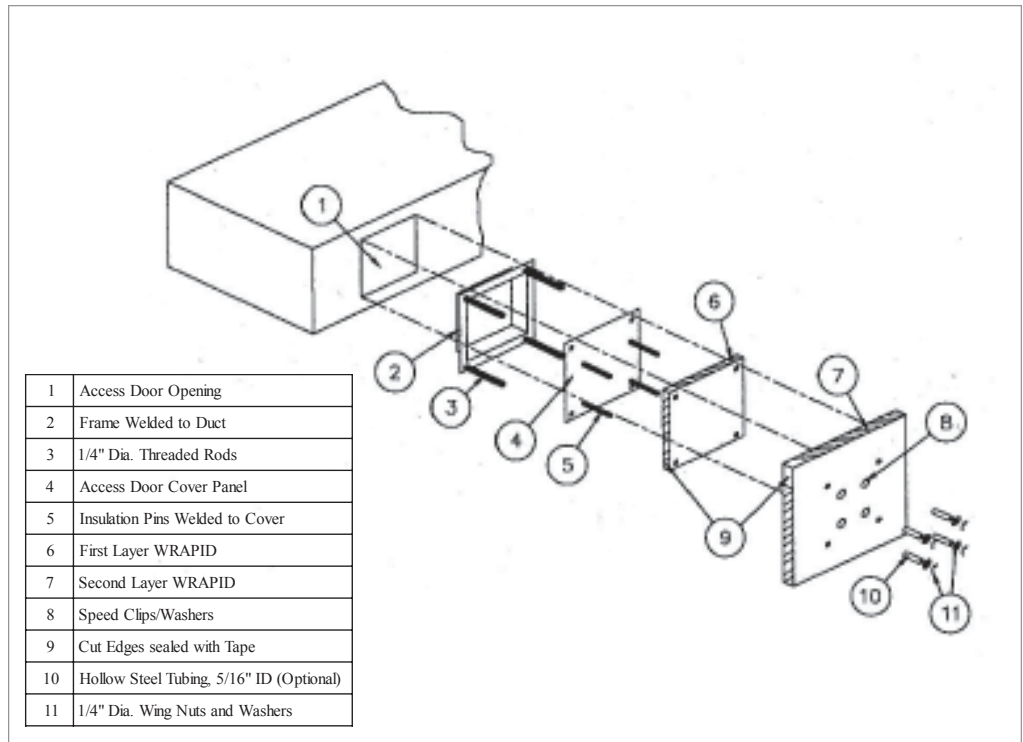
INSTALLATION GUIDE

8050 Highland Pointe Parkway • Macedonia, Ohio • 800-863-5400 • Fax: 330-468-6610 • www.etschaefer.com

Access Door

For field fabricated access doors, weld threaded rod to each corner of the reinforcing frame on the access door opening. Cover with steel sleeves (optional) for easy removal of blanket. Weld at least four steel insulation pins to the outside of the door cover panel, 1" from each corner on a maximum 12" centers if appropriate. Cut through the one layer of WRAPID duct insulation already covering the duct and access door opening. Cut an additional piece of insulation with dimensions 1" wider than the existing piece covering the opening. Seal all cut edges with aluminum foil tape. Install over the

insulation pins to form a 1" step joint with the first layer. Secure with washers and bend over excess pin lengths to eliminate sharp ends. Place washers on threaded rod and secure with nuts. Do not install banding over this area.



WRAPID I

ETS Schaefer

GREASE DUCT FIRESTOP SYSTEM

INSTALLATION GUIDE

8050 Highland Pointe Parkway • Macedonia, Ohio • 800-863-5400 • Fax: 330-468-6610 • www.etschaefer.com

Through Penetration Firestop

For through penetration fire stopping, pack the annular space between the WRAPID 1 grease duct blanket and the penetration opening with ceramic fiber or calcium magnesium silicate to within 1" of the surface. Fill this area with Nelson Firestop Putty to a thickness of no less than 1". For floor penetrations the putty material is applied to the top surface of the ceramic fiber. When the

duct assembly is passing through walls the Firestop putty must be applied to both sides.

1	Concrete Floor/Wall assembly
2	Grease Duct
3	WRAPID 1 Duct Wrap
4	Banding or Pinning
5	Ceramic Fiber
6	Firestop Putty 1" thickness



Through Penetration Firestop

