

INSTALLATION GUIDE

8050 Highland Pointe Parkway • Macedonia, Ohio • 800-863-5400 • Fax: 330-468-6610 • www.etschaefer.com

GREASE DUCT ENCLOSURE

Grease Duct Enclosure

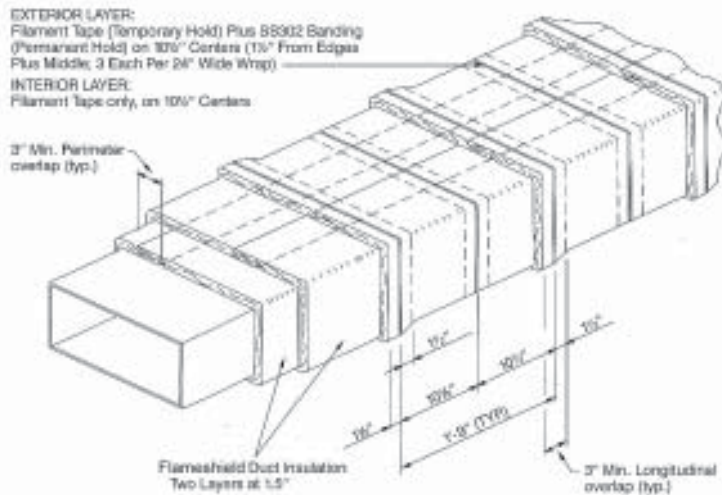
Flameshield Blanket (FSB™) duct insulation consists of a two-layer system applied directly on to the duct surface to provide a 2-hour rated enclosure with zero clearance to combustibles. The first layer of the FSB™ duct insulation shall be installed so all perimeter and longitudinal seams form butt joints. The second layer of FSB™ is installed with 3" perimeter and 3" longitudinal overlaps. The second-layer joints should be offset from the first-layer joints a minimum of 10". To ease in installation 1" wide filament tape may be used to temporarily hold FSB™ duct insulation in place. Install the tape 1.5" from the blanket edge and approximately 10.5" on center. Utilize stainless steel banding to permanently attach the material,

placing the banding over the tape in the same locations. Tighten banding to firmly hold the wrap system in place being careful not to cut foil or otherwise damage the blanket.

For ducts with spans greater than 24" wide, steel insulation pins shall be welded on the bottom of horizontal ducts and continue on the outside of vertical ducts rises. Space pins in columns 12" on center, 6" to 12" from each duct edge and 10.5" apart. FSB™ is impaled over the pins and held in place with speed clips to keep the system from sagging. Bend over exposed ends of pins to eliminate safety hazards.



FSB 2-Layer, 2-hour Grease Duct Enclosure
Maximum Duct size 24" x 48"



FSB™
2 LAYER

ETS Schaefer

INSTALLATION GUIDE

8050 Highland Pointe Parkway • Macedonia, Ohio • 800-863-5400 • Fax: 330-468-6610 • www.etschaefer.com

GREASE DUCT FIRESTOP SYSTEM

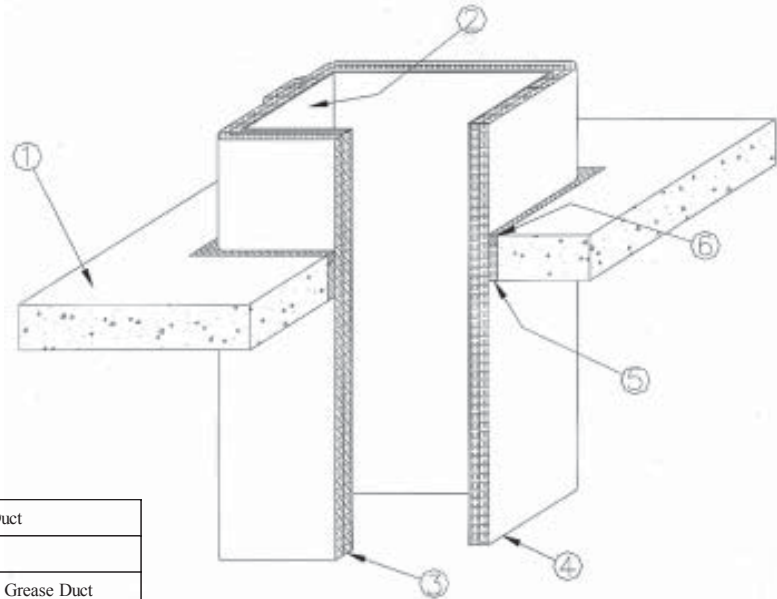
Through Penetration Firestop

For through penetration fire stopping, pack the annular space between the WRAPID 1 grease duct blanket and the penetration opening with ceramic fiber or calcium magnesium silicate to within 1" of the surface. Fill this area with Nelson Firestop Putty to a thickness of no less than 1". For floor penetrations

the putty material is applied to the top surface of the ceramic fiber. When the duct assembly is passing through walls the Firestop putty must be applied to both sides.



Through Penetration Firestop



1	Insulated Grease Duct
2	Steel Duct
3	1st Layer-Insulated Grease Duct
4	2nd Layer-Insulated Grease Duct
5	Bulk Ceramic Fiber
6	1" depth Nelson FSP Flameseal Putty

FSB™
2 LAYER

ETS Schaefer

INSTALLATION GUIDE

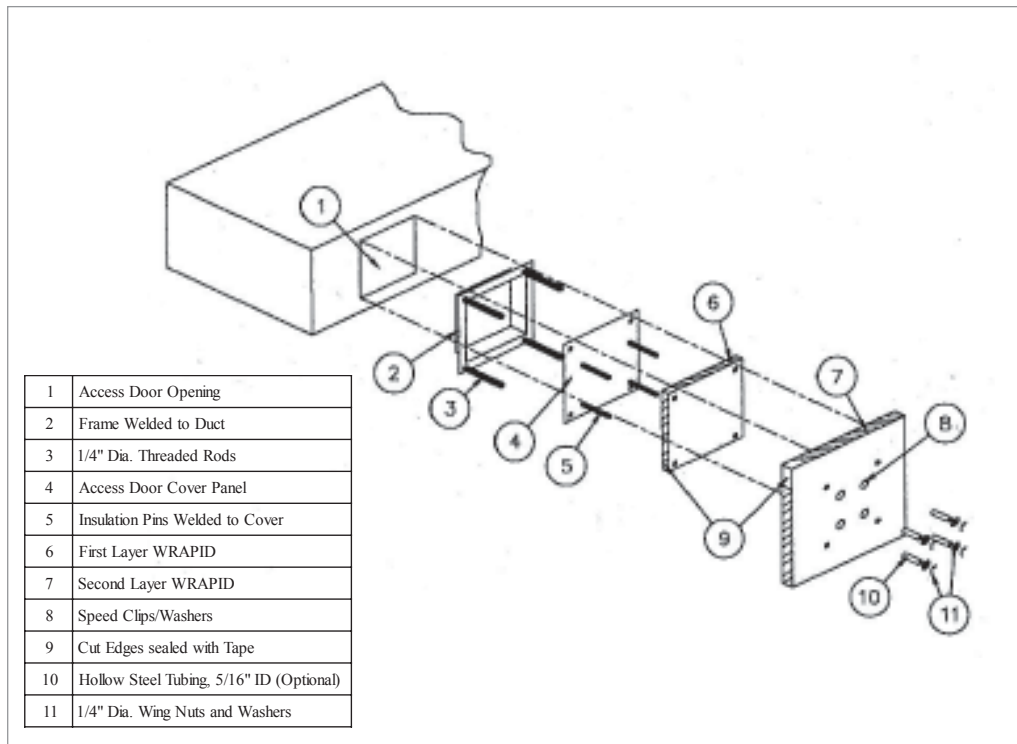
8050 Highland Pointe Parkway • Macedonia, Ohio • 800-863-5400 • Fax: 330-468-6610 • www.etschaefer.com

GREASE DUCT ACCESS DOOR

Access Door

For field fabricated access doors, weld threaded rod to each corner of the reinforcing frame on the access door opening. Cover with steel sleeves (optional) for easy removal of blanket. Weld at least four steel insulation pins to the outside of the door cover panel, 1" from each corner on a maximum 12" centers if appropriate. Cut through the two layers of FSB duct insulation already covering the duct and access door opening. For first layer cut an

additional piece of insulation with dimensions 2" wider than the existing piece covering the opening. Cut the second piece of FSB duct insulation 2" larger than the first layer. Seal all cut edges with aluminum foil tape (optional). Install both layers over the insulation pins to form a 2" step joint with the both layers of insulation. Secure with washers and bend over excess pin lengths to eliminate sharp ends. Place washers on threaded rod and secure with nuts. Do not install banding over this area.



FSB™
2 LAYER

ETS Schaefer